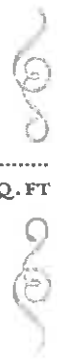




PLAN TWO-R
APPROX. 4,792 SQ. FT



- Two-Story with Grand Staircase
- Superior Courtyard with Covered Loggia and Fireplace
- Formal Dining Room with Butler's Pantry and Wine Room with Optional Built-In
- Color with Optional Access to Loggia
- Receiving Room with Fireplace and Access to Covered Loggia
- Family Room off Kitchen
- Kitchen with Breakfast Bar Island and Multiple Pantries
- Island with Cabinetry
- First Floor Guest Room with Private Bath and Patio (Elevation B)
- Secondary Bedrooms on Second Floor, each with Private Bath and Walk-In Closet
- Master Bedroom Suite with Retreat, Deck, Multiple Walk-In Closets, Separate Tub and Shower, Vanity and Dual Sinks
- 3 Bathrooms
- Man's Library
- First Floor Laundry Room with Sink
- Car Garage
- Plan Alternates:
- Optional Home Office/Gym or Master Suite Private Gym at Bedroom 4
- Optional Outdoor Bar Area and Storage
- 2-Bay Garage



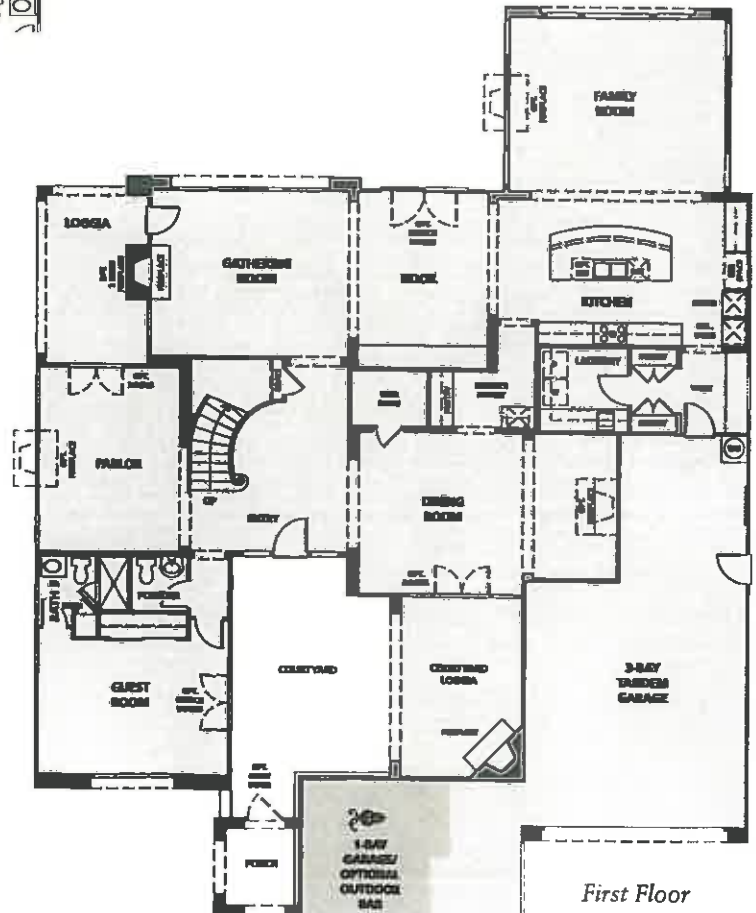
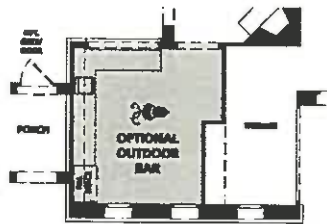
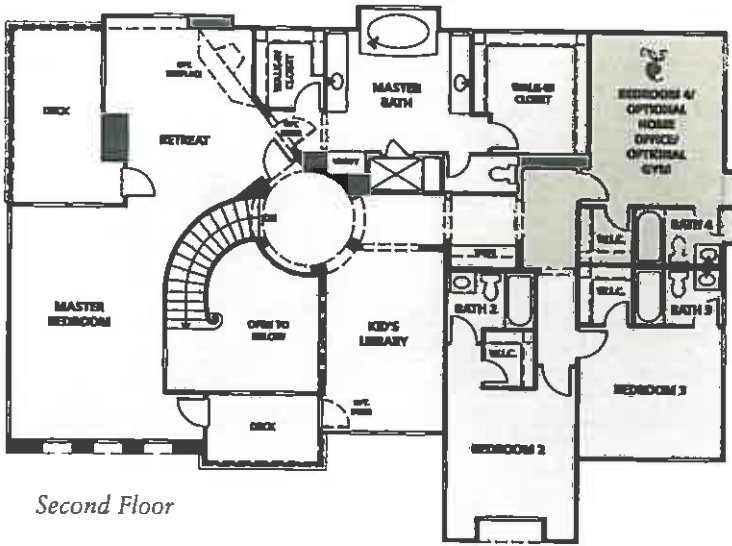
PLAN 2BR - TUSCAN



PLAN 2GR - MONTEREY RANCH



PLAN 2DR - SPANISH - MODELED



The world of luxury living is yours to explore at Messina...