

# THE GARDENS

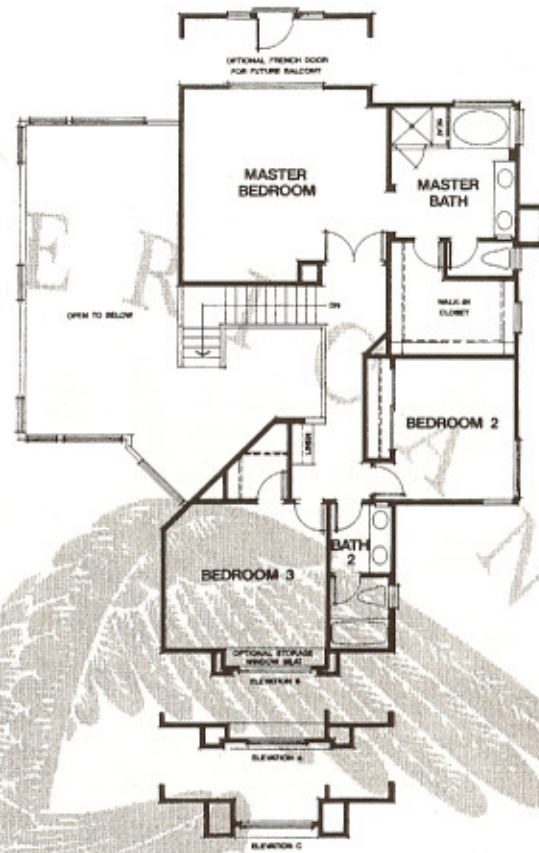
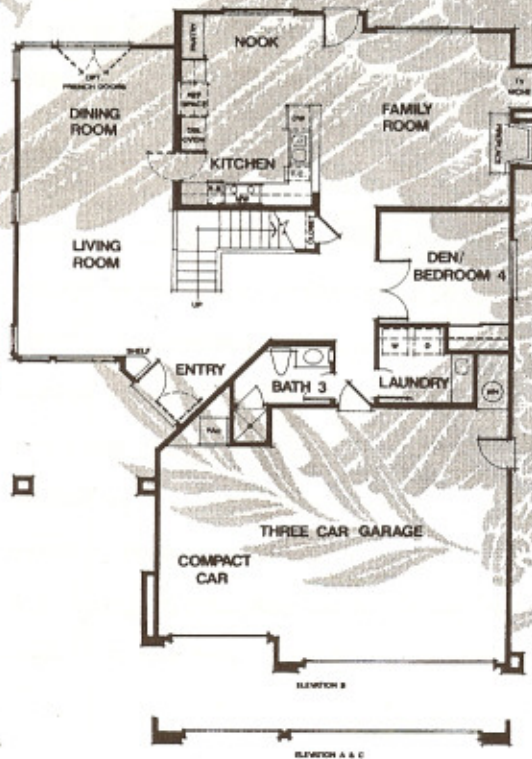
## Plan 2

SANDPIPER at Aviara



Two-Story • Four Bedrooms  
Or Three Bedrooms Plus I

- Three Full Baths
- Three-Car Garage
- 2,412 Square Feet



Offering the perfect setting for the entire family, The Gardens features a spacious family room with a woodburning fireplace and TV niche. A formal dining room offers optional French doors that open to the rear yard. The kitchen provides a double oven, pantry and windowed nook area. A lower-level bedroom can serve as a home office or den. Upstairs, the master suite offers a large walk-in closet, an optional fireplace, and French doors. You'll appreciate Warmington's attention to detail with energy-saving features like exterior wall and ceiling insulation and dual-glazed insulated windows.